

Salient and Reentrant Points of Discrete Sets

Alain Daurat^{a,1} and Maurice Nivat^b

^aLSIIT CNRS UMR 7005, Université Louis Pasteur (Strasbourg 1), Pôle API, Boulevard Sébastien Brant, 67400 Illkirch-Graffenstaden, France, daurat@dpt-info.u-strasbg.fr

^bLIAFA CNRS UMR 7089, Université Denis Diderot (Paris 7), Case 7014, 2 place Jussieu, 75251 Paris Cedex 05, France, Maurice.Nivat@liafa.jussieu.fr

Abstract

The border-salient and reentrant points of a discrete set are special points of the border of the set. When they are given with multiplicity they completely characterize the set, and without multiplicity they characterize the set if all its 8-components are 4-connected. The inner-salient and reentrant are defined similarly to the border ones, but we show that, in general, they do not characterize the set, even if this set is 4-simply connected. We also show that the genus of a set can be easily computed from the number of salient and reentrant points.

A discrete set is a finite subset of the integer plane \mathbb{Z}^2 . Intuitively a discrete set can be described by its border, but this border can also be characterized by the points where there is a change of direction. In this paper these points are said to be salient and reentrant points. In fact we define two types of salient and reentrant points: the first ones are on the border of the set, and the second ones are in the inner of the set. For each definition we will study the determination of the discrete sets by such special points.

1 Preliminaries

1.1 Definitions and Notations

A multiset is a set where each element can be repeated. If E is a multiset, and $M \in E$ we denote by $\text{mult}_E(M)$ the number of repetitions of M in E . The set of elements of E (where all the elements are counted only one time) is denoted $\text{supp}(E)$. So, formally a multiset E is the function $\text{mult}_E : F \rightarrow \mathbb{N}^*$ where $F = \text{supp}(E)$.

The cardinal of a set E is denoted $|E|$. If E is a multiset then $|E|$ is the sum of the multiplicities of the elements of E . The complementary of a discrete set E is the set $\mathbb{Z}^2 \setminus E$ and is denoted E^c . The symmetrical difference of two sets E and F is $(E \setminus F) \cup (F \setminus E)$ and is denoted $E\Delta F$.

The half-integer plane denoted by $P_{1/2}$ is the image of the integer plane by the translation of vector $(\frac{1}{2}, \frac{1}{2})$.

$$P_{1/2} = \left\{ \left(i + \frac{1}{2}, j + \frac{1}{2} \right) : (i, j) \in \mathbb{Z}^2 \right\}$$

([1]).

¹ Partially supported by the Project EPML-9 of French CNRS.

A discrete set E can be seen as a subset $C(E)$ of \mathbb{R}^2

$$C(E) = \bigcup_{M \in E} \left(M + \left[-\frac{1}{2}, \frac{1}{2} \right]^2 \right).$$

The border of E is the topological boundary of $C(E)$ and is a finite union of polygonal closed lines whose edges are all horizontal or vertical and whose vertices are in $P_{1/2}$.

A 4-path (resp. an 8-path) is a finite sequence (M_0, M_1, \dots, M_n) of points of \mathbb{Z}^2 such that $M_{i+1} - M_i$ is in the set $\{(\pm 1, 0), (0, \pm 1)\}$ (resp. $\{(\pm 1, 0), (0, \pm 1), (\pm 1, \pm 1)\}$). Two points of A and B are said to be k -connected in a set $E \subset \mathbb{Z}^2$ ($k \in \{4, 8\}$) if there is a k -path between A and B and which is included in E . The k -connectedness is an equivalence relation on the points of E . The equivalence classes are the k -components of E . We denote by $n_k(E)$ the number of k -components of E . A set E is said to be k -connected if it has only one k -component and it is said to be simply k -connected if E is k -connected and E^c is $(12 - k)$ -connected.

The lexicographical order on the points of \mathbb{Z}^2 is defined by:

$$(x, y) \prec (x', y') \Leftrightarrow x < x' \text{ or } (x = x' \text{ and } y \leq y').$$

1.2 Odd Border Points

In this paragraph we define special points which will be very linked to the border-salient/reentrant points of next section.

Definition 1 *If E is a discrete set, the set of odd border points (denoted $\mathcal{O}(E)$) is :*

$$\mathcal{O}(E) = \left\{ (i, j) \in P_{1/2} : \left| \left\{ \left(i \pm \frac{1}{2}, j \pm \frac{1}{2} \right) \right\} \cap E \right| \in \{1, 3\} \right\}$$

The main interest of the definition is that a discrete set is completely characterized by its odd border points:

Proposition 2 *If two discrete sets E and F satisfy $\mathcal{O}(E) = \mathcal{O}(F)$ then $E = F$.*

Lemma 3 *Let E be a discrete set and $M \notin E$ then $\mathcal{O}(E \cup \{M\}) = \mathcal{O}(E) \Delta \left\{ M + \left(\pm \frac{1}{2}, \pm \frac{1}{2} \right) \right\}$ where Δ denotes the symmetric difference.*

PROOF. Let N be in $\left\{ M + \left(\pm \frac{1}{2}, \pm \frac{1}{2} \right) \right\}$. The point M is not in E so the number $|E \cap \{N + \left(\pm \frac{1}{2}, \pm \frac{1}{2} \right)\}|$ is odd if and only if $|(E \cup \{M\}) \cap \{N + \left(\pm \frac{1}{2}, \pm \frac{1}{2} \right)\}|$ is even. Then the lemma follows from the definition of \mathcal{O} . \square

PROOF of Proposition 2. We prove the property by recurrence on $|E|$. So we suppose that the property is true for any sets E such that $|E| \leq n$ and we suppose that we have two sets E and F such that $|E| = n + 1$ and $\mathcal{O}(E) = \mathcal{O}(F)$. Let $(x, y) \in \mathcal{O}(E)$ be the point of $P_{1/2}$ which is minimum for the lexicographical order. The point $M = \left(x + \frac{1}{2}, y + \frac{1}{2} \right)$ must be in both E and F . So we consider $E' = E \setminus \{M\}$ and $F' = F \setminus \{M\}$. By the previous lemma:

$$\begin{aligned} \mathcal{O}(E') &= \mathcal{O}(E) \Delta \left\{ M + \left(\pm \frac{1}{2}, \pm \frac{1}{2} \right) \right\} \\ &= \mathcal{O}(F) \Delta \left\{ M + \left(\pm \frac{1}{2}, \pm \frac{1}{2} \right) \right\} \\ &= \mathcal{O}(F'). \end{aligned}$$

So by recurrence $E' = F'$ and then $E = F$. \square

2 Border Salient/Reentrant Points

2.1 Definitions

Definition 4 • A corner is a couple (M, N) when $M \in P_{1/2}$ and $N \in \mathbb{Z}^2$ and $M - N$ is in $\{(\pm\frac{1}{2}, \pm\frac{1}{2})\}$.

- A corner (M, N) is a salient corner of E if $N \in E$ and M is the extremity of two edges of the border of E which are also sides of the square $N + [-\frac{1}{2}, \frac{1}{2}]^2$.
- A corner (M, N) is a reentrant corner of E if $N \in E$ and M is the extremities of two consecutive edges of the border E which are not sides of the square $N + [-\frac{1}{2}, \frac{1}{2}]^2$.

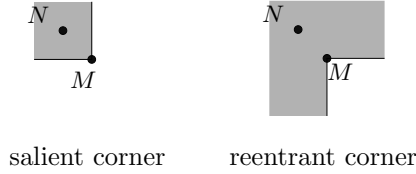


Fig. 1. Corners

Now we can define the border-salient/reentrant points:

Definition 5 The multiset of border-salient (resp border-reentrant) points of a discrete set E , denoted $\mathcal{S}_B(E)$ (resp $\mathcal{R}_B(E)$) is the multiset whose support is included in $P_{1/2}$ and such that for any $M \in P_{1/2}$, the number $\text{mult}_{\mathcal{S}_B(E)}(M)$ (resp $\text{mult}_{\mathcal{R}_B(E)}(M)$) is the number of N such that (M, N) is a salient corner (resp reentrant corner).

The different local configurations are described in figure 2. In particular a border-salient point can have multiplicity 1 or 2, and a border-reentrant points has always the multiplicity 1.

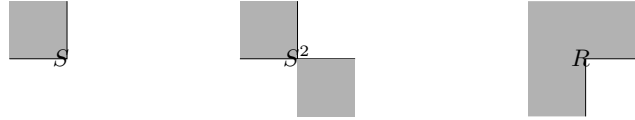


Fig. 2. Definition of the border salient and reentrant points. (The exponent indicates the multiplicity)

We notice that any odd border point is salient or reentrant. The inverse is not true since the salient points of multiplicity 2 are not odd border points. More precisely if:

$$\mathcal{D}(E) = \left\{ (x, y) \in P_{1/2} : E \cap \left\{ \left(x \pm \frac{1}{2}, y \pm \frac{1}{2} \right) \right\} = \left\{ \left(x - \frac{1}{2}, y - \frac{1}{2} \right), \left(x + \frac{1}{2}, y + \frac{1}{2} \right) \right\} \text{ or } \left\{ \left(x - \frac{1}{2}, y + \frac{1}{2} \right), \left(x + \frac{1}{2}, y - \frac{1}{2} \right) \right\} \right\} \quad (1)$$

then

$$\begin{aligned} \mathcal{D}(E) &= \{M \in \text{supp}(\mathcal{S}_B(E)) : \text{mult}_{\mathcal{S}_B(E)}(M) = 2\}, \\ \mathcal{O}(E) &= (\text{supp}(\mathcal{S}_B(E)) \cup \mathcal{R}_B(E)) \setminus \mathcal{D}(E). \end{aligned} \quad (2)$$

2.2 Genus and number of salient/reentrant points

We recall that the 4-genus of a discrete set E (denoted $g_4(E)$) is $n_4(E) - n_8(E^c) + 1$.

A first property of the salient and reentrant points is the computation of the genus with them:

Proposition 6 If E is a discrete set then $g_4(E) = \frac{1}{4}(|\mathcal{S}_B(E)| - |\mathcal{R}_B(E)|)$. In particular if E is 4-simply connected then $|\mathcal{S}_B(E)| = |\mathcal{R}_B(E)| + 4$.

We recall that a 4-simple point of E is a point $M = (x, y) \in E$ such that $\{x \pm 1, y \pm 1\} \cap E$ is 4-connected and $\{x \pm 1, y \pm 1\} \cap E^c$ is 8-connected. A classical property of simple points is the following: ([4, Proposition 4.1])

Proposition 7 A point M is a simple point of E if and only if $n_4(E \setminus \{M\}) = n_4(E)$ and $n_8((E \setminus \{M\})^c) = n_8(E^c)$.

PROOF of Proposition 6. We will prove the property by recurrence on the cardinal of the set. Suppose that the property is true for any set F such that $|F| \leq n - 1$ and let E be a set of cardinal n . Let $M = (x, y)$ be the point of E which is minimum for the lexicographical order. We know that the set $E' = E \setminus \{M\}$ satisfies $g_4(E') = \frac{1}{4}(|\mathcal{S}_B(E')| - |\mathcal{R}_B(E')|)$.

By hypothesis the points $(x - 1, y - 1), (x - 1, y), (x + 1, y - 1), (x + 1, y)$ are not in E , but the other four 8-neighborhoods of M can be in E or not, so there are 16 possibilities which are grouped in three cases (see Figure 3).

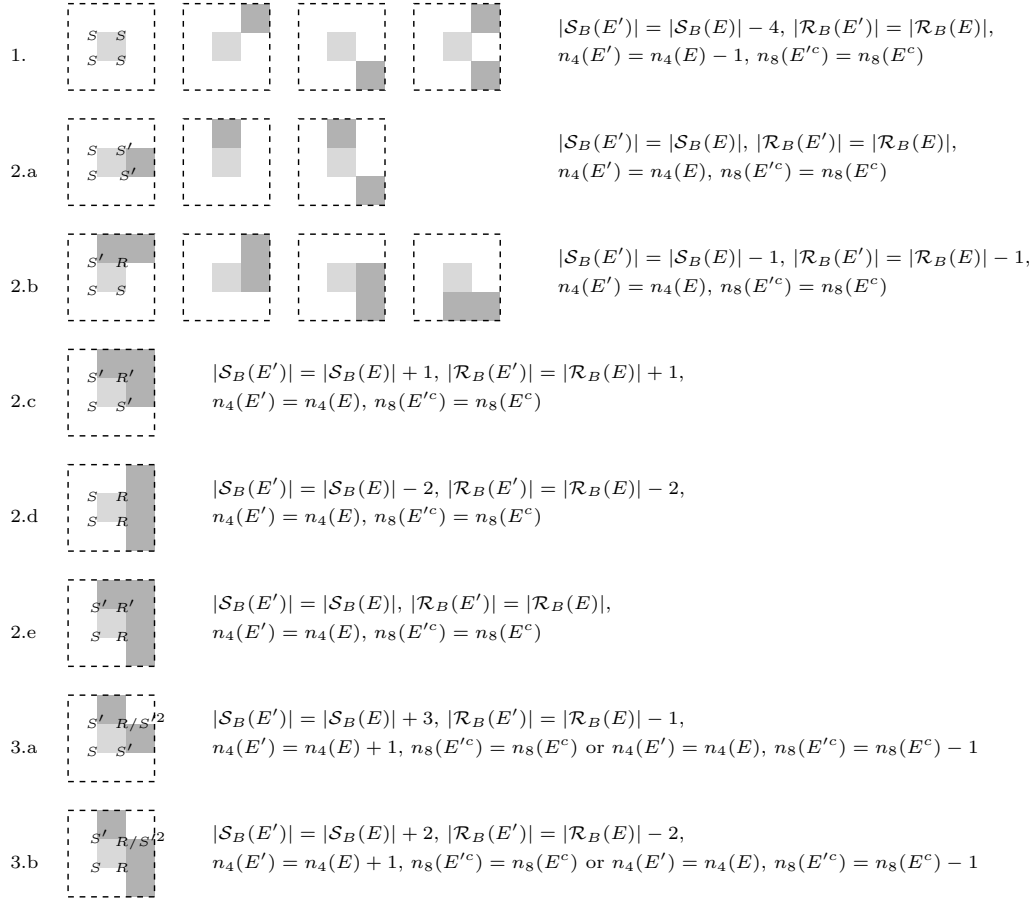


Fig. 3. The different cases in the proof of Proposition 6.

- (1) In this case we suppose that the point M is *isolated*, which means that the four points $(x \pm 1, y), (x, y \pm 1)$ are not in E . We have $\mathcal{S}_B(E) = \mathcal{S}_B(E') \cup \{x \pm \frac{1}{2}, y \pm \frac{1}{2}\}$ and $\mathcal{R}_B(E) = \mathcal{R}_B(E')$. A 4-path in E between two points of $E \setminus \{M\}$ cannot pass through M since the four points $(x \pm 1, y \pm 1)$ are not in E , so $n_4(E) = n_4(E') + 1$. An 8-path in E'^c between two points A, B can pass through M but all the 8-neighborhood of M

which are in E^c can be linked by an 8-path which does not pass through M , so we can modify the initial 8-path so that it does not pass through M but always links A and B and is contained in E^c thus $n_8(E^c) = n_8(E'^c)$. So finally

$$\begin{aligned}
g_4(E) &= n_4(E) - n_8(E^c) + 1 \\
&= n_4(E') + 1 - n_8(E'^c) + 1 \\
&= g_4(E') + 1 \\
&= \frac{1}{4}(|S_B(E')| - |R_B(E')|) + 1 && \text{by the recurrence hypothesis} \\
&= \frac{1}{4}(|S_B(E)| - 4 - |R_B(E)|) + 1 \\
&= \frac{1}{4}(|S_B(E)| - |R_B(E)|)
\end{aligned}$$

- (2) We now consider the case where M is a simple point. By Proposition 7 we have $n_4(E) = n_4(E')$ and $n_8(E^c) = n_8(E'^c)$. By considering all the possibilities (cases 2. of Figure 3) we can see that $(|S_B(E)| - |R_B(E)|) = |S_B(E')| - |R_B(E')|$ and so $g_4(E) = \frac{1}{4}(|S_B(E)| - |R_B(E)|)$.
- (3) It remains the case where M is neither simple nor isolated. By Proposition 7 we know that

$$n_4(E) \neq n_4(E') \text{ or } n_8(E^c) \neq n_8(E'^c). \quad (3)$$

Let $A = (x, y + 1)$, $B = (x + 1, y)$, $C = (x + 1, y + 1)$, $D = (x - 1, y - 1)$. We have $A, B \in E$ and $C, D \in E^c$ (cases 3. of Figure 3). The 4-components of E which do not contain neither A nor B are also 4-components of E' , similarly the 8-components of E^c which do not contain neither C or D are 8-components of E'^c . So

$$n_4(E) \leq n_4(E') \leq n_4(E) + 1 \text{ and } n_8(E'^c) \leq n_8(E^c) \leq n_8(E'^c) + 1. \quad (4)$$

If A and B are 4-connected in E' , then we have $n_4(E) = n_4(E')$ and so by (3) and (4) we have $n_8(E^c) = n_8(E'^c) + 1$. If A and B are not 4-connected in E' then by considering the border of the 4-component of E' containing A we can prove that C and D are 8-connected in E^c (see border following algorithm BF_4 in [4, p626]). Then $n_4(E) = n_4(E') - 1$ and $n_8(E^c) = n_8(E'^c)$. So in the two cases we have $n_4(E) - n_8(E^c) = n_4(E') - n_8(E'^c) - 1$. Moreover we have $|S_B(E')| - |R_B(E')| = |S_B(E)| - |R_B(E)| + 4$ (see the two cases 3.a, 3.b of Figure 3). So $g_4(E) = \frac{1}{4}(|S_B(E)| - |R_B(E)|)$. \square

Remark 8 In [5, Proposition 2.7.1] it is proved that $g_4(E) = |E| - e_1 - e_2 + f$ with:

$$\begin{aligned}
e_1 &= |\{(x, y) : |E \cap \{(x, y), (x + 1, y)\}| = 2\}|, \\
e_2 &= |\{(x, y) : |E \cap \{(x, y), (x, y + 1)\}| = 2\}|, \\
f &= |\{(x, y) : |E \cap \{(x, y), (x + 1, y), (x, y + 1), (x + 1, y + 1)\}| = 4\}|.
\end{aligned}$$

In fact the proofs of these two propositions are very similar. Moreover we can deduce one from each other: Let k_1, \dots, k_{16} be the number of occurrences of each configuration in Figure 4 (notice that $k_1 = \infty$ and the other k_i are finite). By considering the configurations which have

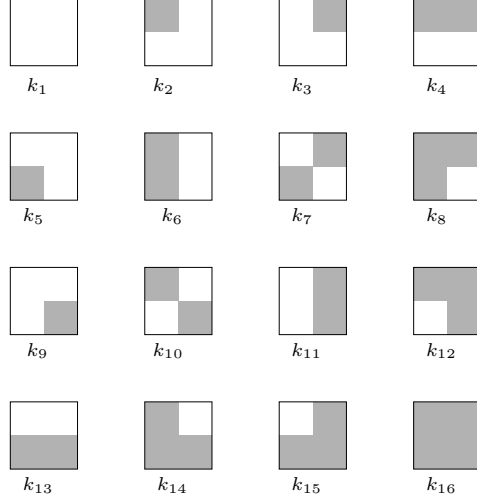


Fig. 4. The possibilities for the intersection of a discrete set and a 2×2 square.

a common bar we have:

$$\begin{aligned}
k_2 + k_6 + k_{10} + k_{14} &= k_5 + k_6 + k_7 + k_8, \\
k_3 + k_7 + k_{11} + k_{15} &= k_9 + k_{10} + k_{11} + k_{12}, \\
k_4 + k_8 + k_{12} + k_{16} &= k_{13} + k_{14} + k_{15} + k_{16}, \\
k_2 + k_4 + k_{10} + k_{12} &= k_3 + k_4 + k_7 + k_8, \\
k_5 + k_7 + k_{13} + k_{15} &= k_9 + k_{10} + k_{13} + k_{14}, \\
k_6 + k_8 + k_{14} + k_{16} &= k_{11} + k_{12} + k_{15} + k_{16}.
\end{aligned}$$

We deduce that:

$$\begin{aligned}
k_{10} &= k_5 + k_7 + k_{15} - k_9 - k_{14}, \\
k_4 &= -k_8 - k_3 + k_5 + k_{13} + k_{15}, \\
k_{12} &= k_3 + k_{14} - k_5, \\
k_6 &= -k_8 + k_{11} + k_3 - k_5 + k_{15}, \\
k_2 &= -k_{15} + k_9 + k_8.
\end{aligned} \tag{5}$$

We have:

$$\begin{aligned}
|E| &= k_2 + k_4 + k_6 + k_8 + k_{10} + k_{12} + k_{14} + k_{16}, \\
e_1 &= k_4 + k_8 + k_{12} + k_{16}, \\
e_2 &= k_6 + k_8 + k_{14} + k_{16}, \\
f &= k_{16}, \\
|\mathcal{S}_B(E)| &= k_2 + k_3 + k_5 + k_9 + 2(k_7 + k_{10}), \\
|\mathcal{R}_B(E)| &= k_8 + k_{12} + k_{14} + k_{15}
\end{aligned} \tag{6}$$

By combining (5) and (6) we have:

$$\begin{aligned}
|\mathcal{S}_B(E)| - |\mathcal{R}_B(E)| &= -4k_{15} + 4k_9 + 4k_{10} \\
|E| - e_1 - e_2 + f &= k_{10} + k_9 - k_{15}.
\end{aligned}$$

and so $\frac{1}{4}(|\mathcal{S}_B(E)| - |\mathcal{R}_B(E)|) = |E| - e_1 - e_2 + f$.

2.3 Characterization of a set by its salient/reentrant points

A direct consequence of Proposition 2 and Formula (2) is:

Proposition 9 *If $\mathcal{S}_B(E) = \mathcal{S}_B(F)$ and $\mathcal{R}_B(E) = \mathcal{R}_B(F)$ then $E = F$.*

Figure 5 shows that this proposition becomes wrong if $\mathcal{S}_B(E)$ is given without multiplicity. Nevertheless the two next propositions show that there is also a characterization property if we make supplementary hypothesis on the sets:

Proposition 10 *If $n_4(E) = n_8(E)$, $n_4(E^c) = n_8(E^c)$, $n_4(F) = n_8(F)$, $n_4(F^c) = n_8(F^c)$ and $\text{supp}(\mathcal{S}_B(E)) \cup \text{supp}(\mathcal{R}_B(E)) = \text{supp}(\mathcal{S}_B(F)) \cup \text{supp}(\mathcal{R}_B(F))$ then $E = F$.*

Lemma 11 *If $n_4(E) = n_8(E)$ and $n_4(E^c) = n_8(E^c)$ and $\mathcal{D}(E)$ is defined by (1) then $\mathcal{D}(E)$ is empty.*

PROOF. Consider $L \in \mathbb{N}$ such that $E \subset [-(L-1), (L-1)]^2$, and $F = [-L, L]^2 \setminus E$.

$$\begin{aligned} g_4(E) &= n_4(E) - n_8(E^c) + 1 \\ g_4(F) &= n_4(F) - n_8(F^c) + 1 \\ &= n_4(E^c) - (n_8(E) + 1) + 1 \end{aligned}$$

We have $n_4(E) = n_8(E)$ and $n_4(E^c) = n_8(E^c)$ so

$$g_4(E) + g_4(F) = 1 \tag{7}$$

We have $|\mathcal{S}_B(E)| = |\mathcal{R}_B(F)| + 2|\mathcal{D}|$ and $|\mathcal{S}_B(F)| = |\mathcal{R}_B(E)| + 2|\mathcal{D}| + 4$. So

$$\begin{aligned} |\mathcal{D}(E)| &= \frac{|\mathcal{S}_B(E)| - |\mathcal{R}_B(F)| + |\mathcal{S}_B(F)| - |\mathcal{R}_B(E)| - 4}{4} && \text{by Formula (2)} \\ &= \frac{4g_4(E) + 4g_4(F) - 4}{4} && \text{by Proposition 6} \\ &= 0 && \text{by Formula (7). } \square \end{aligned}$$

PROOF of Proposition 10. By Lemma 11, $\mathcal{D}(E) = \mathcal{D}(F) = \emptyset$, so $\mathcal{O}(E) = \text{supp}(\mathcal{S}_B(E)) \cup \mathcal{R}_B(E) = \text{supp}(\mathcal{S}_B(F)) \cup \mathcal{R}_B(F) = \mathcal{O}(F)$ and the result follows from Proposition 6 \square

Proposition 12 *If $n_4(E) = n_8(E)$, $n_4(F) = n_8(F)$, $\text{supp}(\mathcal{S}_B(E)) = \text{supp}(\mathcal{S}_B(F))$, $\text{supp}(\mathcal{R}_B(E)) = \text{supp}(\mathcal{R}_B(F))$ then $E = F$.*

PROOF. We take the abbreviations $S = \text{supp}(\mathcal{S}_B(E)) = \text{supp}(\mathcal{S}_B(F))$ and $R = \text{supp}(\mathcal{R}_B(E)) = \text{supp}(\mathcal{R}_B(F))$. We will construct the border of E from S and R . Precisely we will construct a sequence $(B_i^k)_{\substack{0 \leq k \leq n-1 \\ 0 \leq i \leq l_k-1}}$ of points of $P_{1/2}$ such that for a fixed k the sequence $B^k = (B_i^k)_{0 \leq i \leq l_k-1}$ is the sequence of consecutive vertices of one of the polygonal closed lines of the border of E .

Suppose that we have constructed the sequence B^0, B^1, \dots, B^{k-1} . If $S \cup R = \{B_i^k : 0 \leq k \leq k-1 \text{ and } 0 \leq i \leq l_k-1\}$ then the integer n is defined to be k . Otherwise we define B_0^k as the minimum point (x, y) for the lexicographical order of the set $(S \cup R) \setminus \{B_i^k : 0 \leq k \leq k-1 \text{ and } 0 \leq i \leq l_k-1\}$. The symbol S' will denote one of the set S and R which contains B_0^k and R' will denote the other set. Now we define the sequence B^k by a recurrence using an auxiliary sequence of vectors (u_i) . Intuitively the points of the sequence (B^k) follow a mobile point which goes in the direction u_i . When this mobile point meets a salient point it turns 90 degrees on one side and when it meets a reentrant point it turns 90 degrees on the other side.

Formally we have $u_0 = (\frac{1}{2}, 0)$ and the following recurrence equation:

$$\begin{aligned} B_{i+1}^k &= B_i^k + tu_i \\ u_{i+1} &= r(u_i) && \text{if } B_i^k \in S' \\ &= r^{-1}(u_i) && \text{if } B_i^k \in R' \end{aligned}$$

where $t = \min\{t > 0 : B_i^k + tu_i \in S \cup R\}$, $r(x, y) = (y, -x)$, $r^{-1}(x, y) = (-y, x)$. The number l_k is defined to be $\min\{i > 0 : B_i^k = B_0^k\}$. We can see by recurrence on i that $(B_{i+1}^k, B_{i+1}^k - u_i + u_{i+1})$ is a salient corner if $B_{i+1}^k \in S$ and $(B_{i+1}^k, B_{i+1}^k - u_i - u_{i+1})$ is a reentrant corner if $B_{i+1}^k \in R$. By definition there is no salient or reentrant point in each segment $[B_i^k, B_{i+1}^k]$ so the polygonal closed line $(B_0^k, B_1^k, \dots, B_{l_k-1}^k, B_0^k)$ is a component of the border of E .

So at the end of this process we have n components B^0, B^1, \dots, B^{n-1} of the border of E , whose elements cover all $S \cup R$. If there was another component in the border of E , then a vertex M of such component would belong to two polygonal lines. So M must be a salient point with multiplicity 2. Then $E \cap \{M + (\pm\frac{1}{2}, \pm\frac{1}{2})\} = \{A, B\}$ where $A = M + (-\frac{1}{2}, -\frac{1}{2})$, $B = M + (\frac{1}{2}, \frac{1}{2})$ or $A = M + (-\frac{1}{2}, \frac{1}{2})$, $B = M + (\frac{1}{2}, -\frac{1}{2})$. Then A and B would not be 4-connected in E , but they are 8-connected so we would have $n_4(E) \neq n_8(E)$. So the border of E is the union of the polygonal lines B^0, B^1, \dots, B^{n-1} , but it depends only on S and R so it is equal to the border of F and then $E = F$. \square

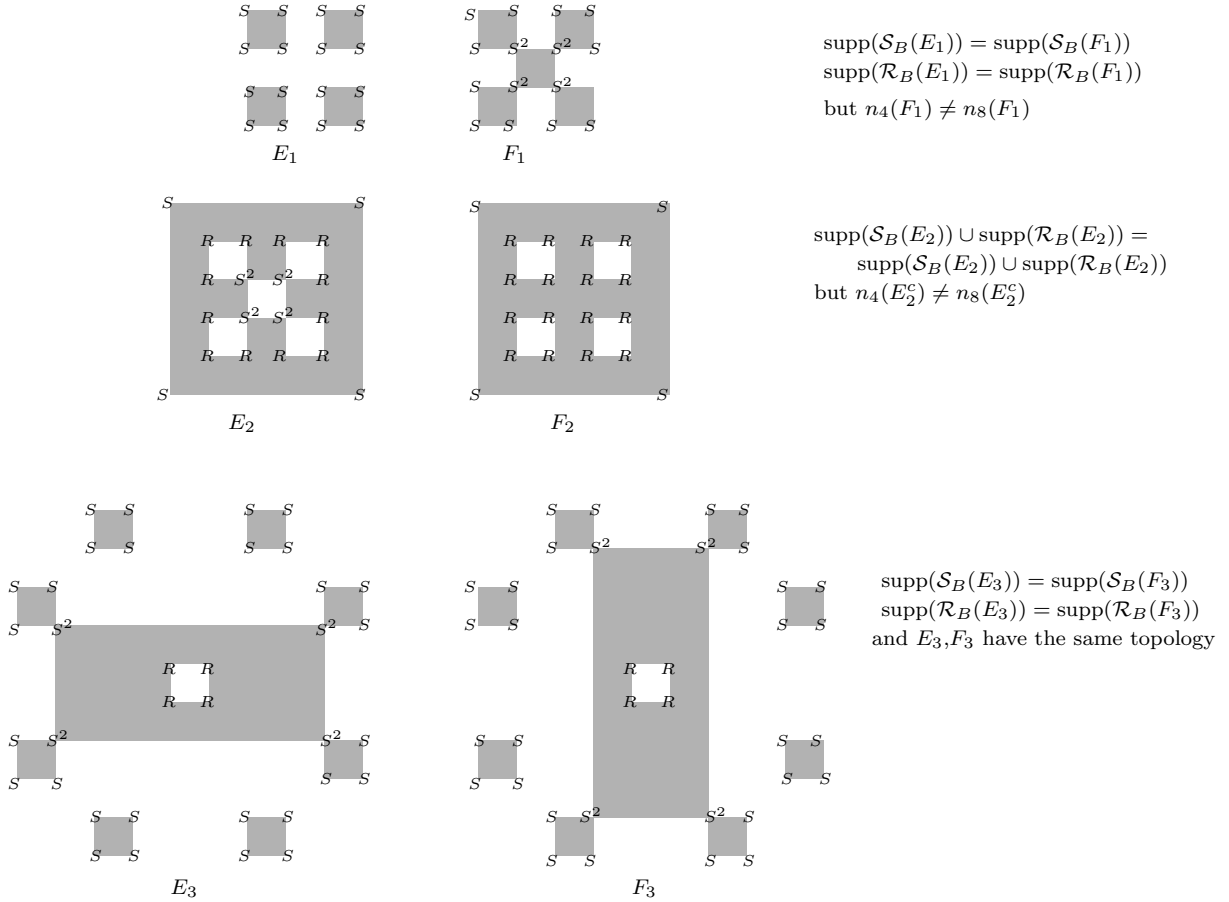


Fig. 5. Pairs of sets which have near border salient/reentrant points.

3 Inner Salient/Reentrant Points

3.1 General sets

Definition 13 The multiset of inner-salient (resp inner-reentrant) points of a discrete set E , denoted $\mathcal{S}_I(E)$ (resp $\mathcal{R}_I(E)$) is the multiset whose support is included in \mathbb{Z}^2 and such that for any $N \in \mathbb{Z}^2$ the number $\text{mult}_{\mathcal{S}_I(E)}(N)$ (resp $\text{mult}_{\mathcal{R}_I(E)}(N)$) is the number of M such that (M, N) is a salient corner (resp reentrant corner).

Figure 6 shows the different local configurations.

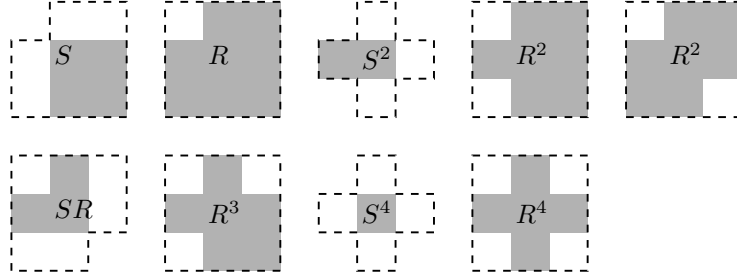


Fig. 6. Inner-salient/reentrant points. (The points outside the dashed boundary can be in E or E^c)

Proposition 14 If E is a discrete set then $|\mathcal{S}_I(E)| = |\mathcal{S}_B(E)|$, $|\mathcal{R}_I(E)| = |\mathcal{R}_B(E)|$.

PROOF. The multisets $\mathcal{S}_I(E)$ and $\mathcal{S}_B(E)$ are in bijection with the set of salient corners of E . In the same way the multisets $\mathcal{R}_I(E)$ and $\mathcal{R}_B(E)$ are in bijection with the set of reentrant corners of E . \square

In particular the formula computing the genus is also true for inner salient/reentrant points: $g_4(E) = \frac{1}{4}(|\mathcal{S}_I(E)| - |\mathcal{R}_I(E)|)$.

The inner salient/reentrant point do not determine the discrete sets even for the 4-simply connected sets (see figure 7).

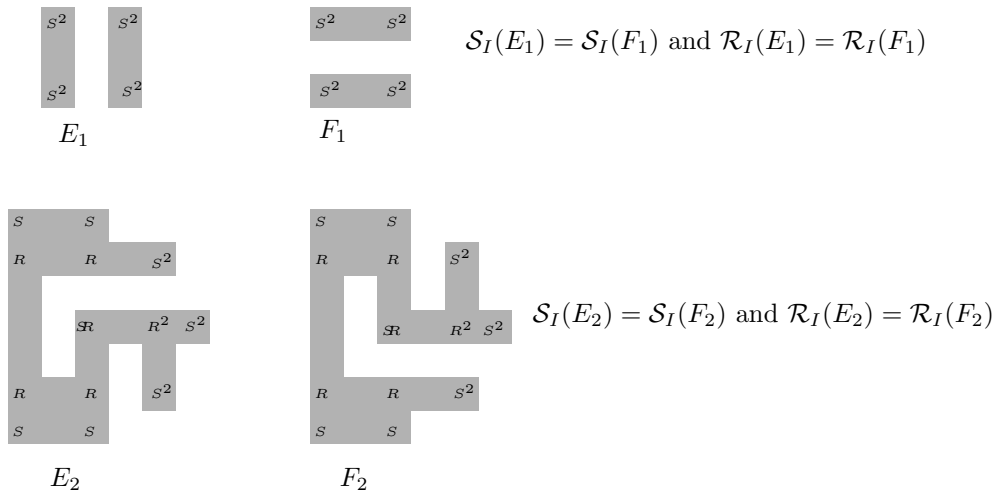


Fig. 7. Pairs of sets which have same inner salient/reentrant points.

Nevertheless, given two multisets S and R we can look for all the sets E such that $\mathcal{S}_I(E) = S$ and $\mathcal{R}_I(E) = R$. Algorithm 1 does this, but restrictively for the class of the 4-simply connected sets. The idea of the algorithm is to find the border of the set, following the ideas of the proof of Proposition 12: we begin with the most left-bottom point of S and we draw the border of the set by consider a mobile point which can turns left when it meets a salient point on its left, and can turns right when it meets a reentrant point. The problem is that sometimes there can be many possibilities for the mobile point (see figure 8). This case did not happen for border salient/reentrant points because the turn was always made at the *first* met salient/reentrant point. Algorithm 1 simply considers all the possibilities, so in fact it has an exponential complexity even if there is only one solution (see example of figure 9). We do not know if the construction of a discrete set from its salient/reentrant points can be done in polynomial time.

Algorithm 1 An algorithm to display the possible borders of a 4-simply connected set from its inner-salient/reentrant points

```

bords( $S, R$ )
   $M_0 \leftarrow$  lexicographical minimum of  $S$ 
  bords1( $S \setminus \{M_0\}, R, [], M_0 - (\frac{1}{2}, \frac{1}{2}), (\frac{1}{2}, 0), (0, \frac{1}{2})$ )
bords1( $S, R, B, M, u, v$ )
  if  $S, R = \emptyset$  and  $M = B_0$  then
    display( $B$ )
    return
  end if
  if  $\neg$ cross( $B, M$ ) then
    return
  end if
   $B \leftarrow [B_0, \dots, B_{\text{length}(B)-1}, M]$ 
   $S' \leftarrow \{M + tu : t > 0 \text{ and } M + v + tu \in S\}$ 
   $R' \leftarrow \{M + tu : t > 0 \text{ and } M - v + tu \in R\}$ 
  for all  $M' \in S' \cup R'$  do
    {The next vertex is chosen in this loop.}
    if  $M' \in S'$  then
      bords1( $S \setminus \{M' + v\}, R, B, M' + u, v, -u$ )
    end if
    if  $M' \in R'$  then
      bords1( $S, R \setminus \{M' - v\}, B, M' - u, -v, u$ )
    end if
  end for
cross( $B, M$ )
   $l \leftarrow$  length( $B$ )
  for  $i \in \{0, \dots, l - 2\}$  do
    if  $[B_i, B_{i+1}] \cap [B_{l-1}, M] \neq \{B_i, B_{i+1}\} \cap \{B_{l-1}, M\}$  then
      return true
    end if
  end for
  return false

```

3.2 Characterization of HV-convex 8-connected sets by Inner Salient Points

A discrete set is HV-convex if the intersection of the set with any horizontal or vertical line is 4-connected. We will see in this paragraph that the 8-connected HV-convex sets are completely characterized by only their salient inner point without multiplicity.

Proposition 15 *Let E and F be two 8-connected HV-convex sets then $\text{supp}(\mathcal{S}_I(E)) = \text{supp}(\mathcal{S}_I(F))$*

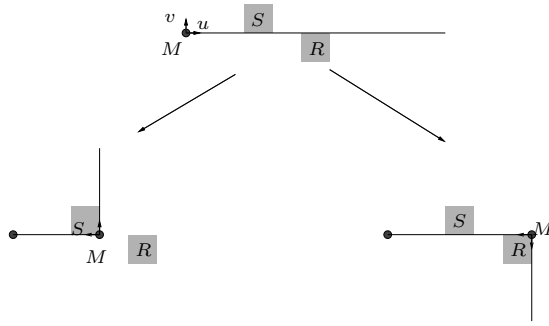


Fig. 8. The choices in Algorithm 1.

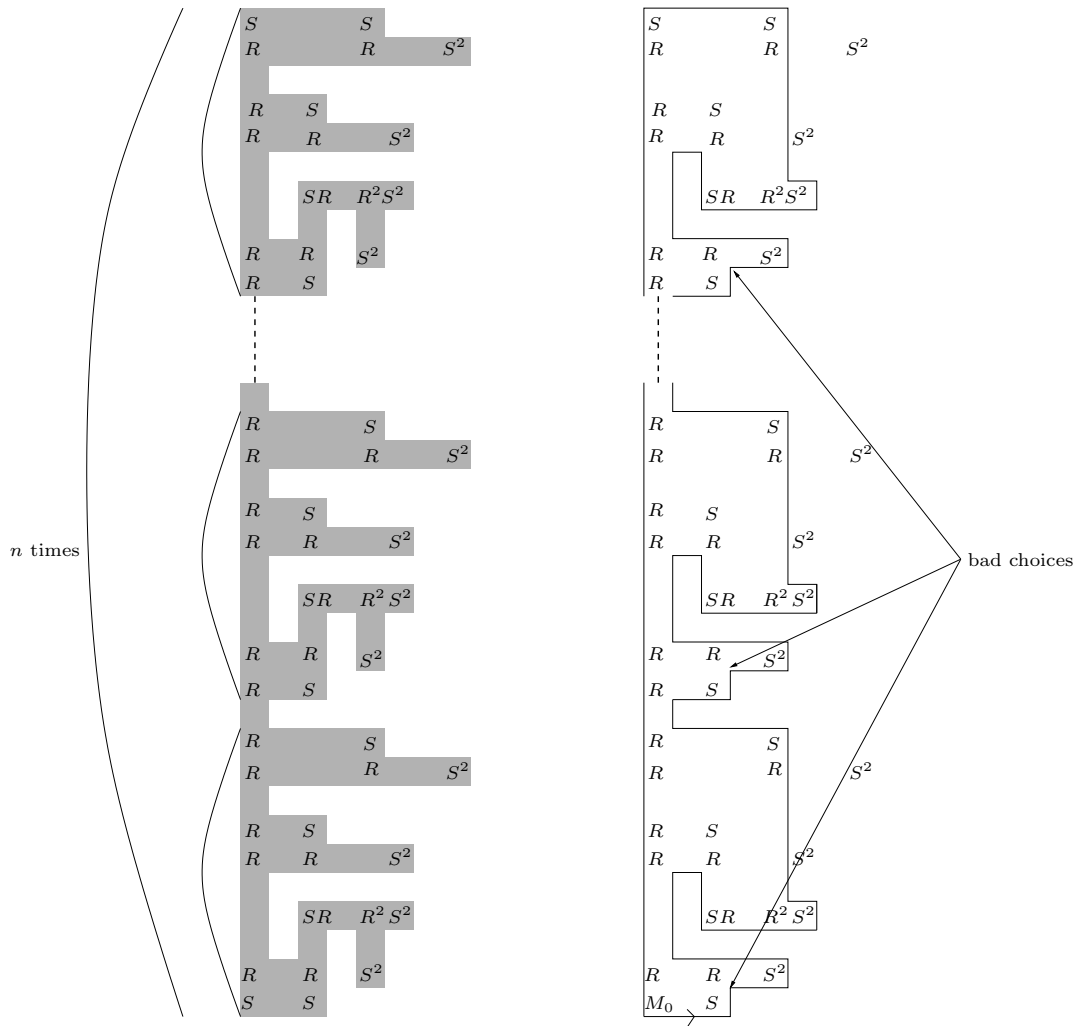


Fig. 9. The set (on the left) takes $\Theta(2^n)$ time to be reconstructed with Algorithm 1. The closed-line (on the right) is the first closed line given by the algorithm, but not all the points have been used, so the the previous choice must be changed.

implies $E = F$.

PROOF. Let $S = \text{supp}(\mathcal{S}_I(E)) = \text{supp}(\mathcal{S}_I(F))$. For any $M \in \mathbb{Z}^2$ we define:

$$\begin{aligned} R_0(M) &= \{(x, y) \in \mathbb{Z}^2 / x \leq x_M \text{ and } y \leq y_M\}, \\ R_1(M) &= \{(x, y) \in \mathbb{Z}^2 / x \geq x_M \text{ and } y \leq y_M\}, \\ R_2(M) &= \{(x, y) \in \mathbb{Z}^2 / x \geq x_M \text{ and } y \geq y_M\}, \\ R_3(M) &= \{(x, y) \in \mathbb{Z}^2 / x \leq x_M \text{ and } y \geq y_M\}. \end{aligned}$$

If $R_0(M) \cap E \neq \emptyset$ then we see that the lexicographical minimum of $R_0(M) \cap E$ is in S . As $S \subset E$ we have $R_0(M) \cap S \neq \emptyset \implies R_0(M) \cap E \neq \emptyset$. In the same way we can prove that for any $i \in \{0, \dots, 3\}$

$$R_i(M) \cap S \neq \emptyset \implies R_i(M) \cap E \neq \emptyset. \quad (8)$$

In [2] it is proved that any HV-convex and 8-connected set E is Q-convex along the horizontal and vertical directions which means that

$$E = \{M \in \mathbb{Z}^2 : \forall i \in \{0, \dots, 3\} R_i(M) \cap E \neq \emptyset\}$$

and so by (8)

$$E = \{M \in \mathbb{Z}^2 : \forall i \in \{0, \dots, 3\} R_i(M) \cap S \neq \emptyset\}$$

which only depends on S . \square

Remark 16 *The definition of the salient points in [3] is equivalent with the inner salient/reentrant points for HV-convex 8-connected sets, but they do not correspond for general sets.*

References

- [1] J.-P. Braquelaire, L. Brun, and A. Vialard. Inter-pixel euclidean paths for image analysis. In S. Miguet, A. Montanvert, and S. Ubedan, editors, *Disc. Geom. for Comp. Imag. (DGCI'96)*, volume 1176 of *Lecture Notes in Computer Science*, pages 193–204. Springer, 1996.
- [2] S. Brunetti and A. Daurat. An algorithm reconstructing convex lattice sets. *Theoret. Comput. Sci.*, 304(1-3):35–57, 2003.
- [3] A. Daurat. Salient points of Q-convex sets. *Int. J. Pattern Recognition & Artificial Intelligence*, 15(7):1023–1030, 2001.
- [4] A. Rosenfeld. Digital topology. *Amer. Math. Monthly*, 86(8):621–630, 1979.
- [5] A. Rosenfeld. *Picture Languages*. Academic Press, 1979.
- [6] J. Serra. *Image analysis and mathematical morphology*. Academic Press, 1982.